

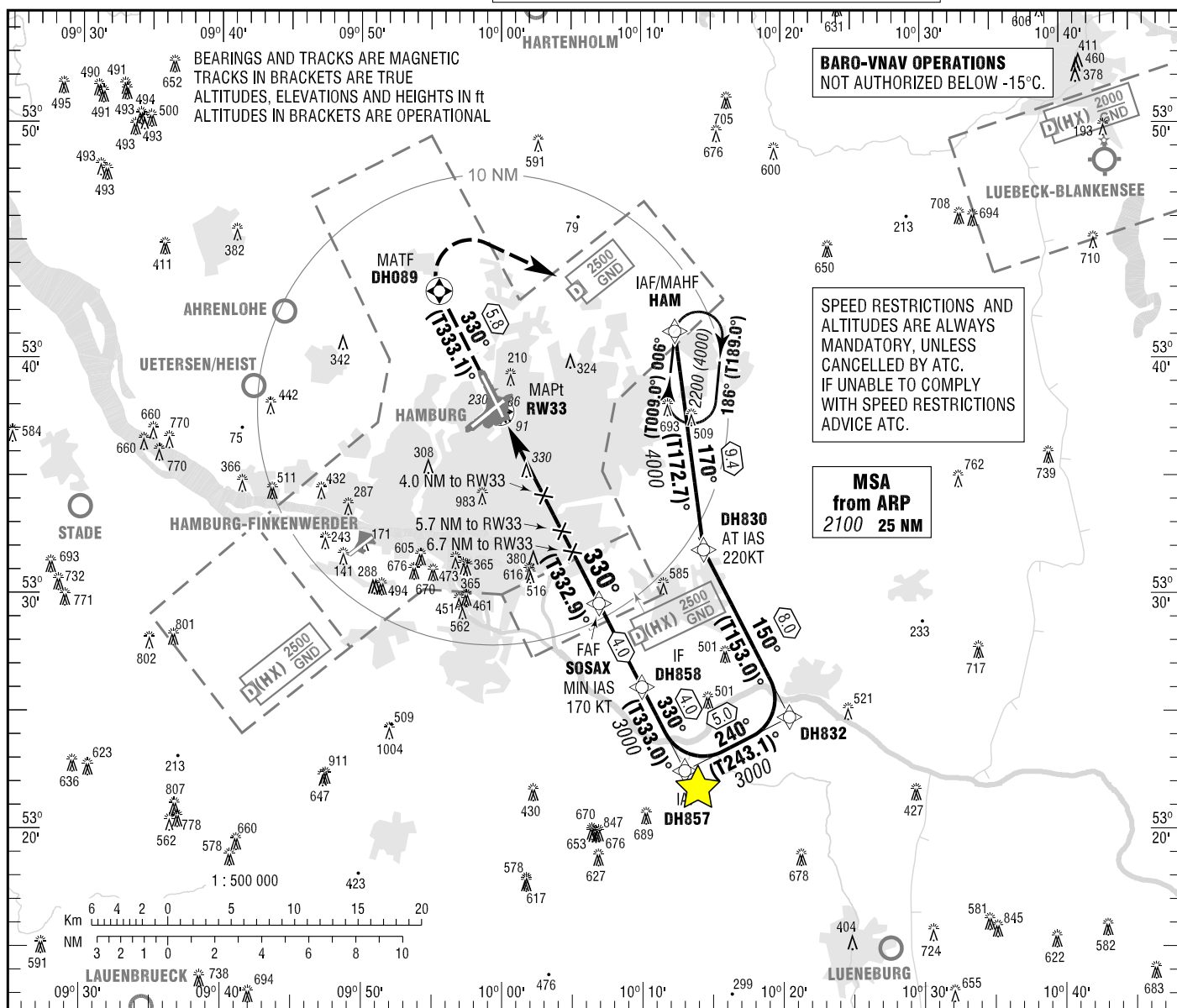
INSTRUMENT
APPROACH
CHART - ICAO

VAR 3° E

ELEV 53
OCH RELATED TO
THR 33 ELEV 35

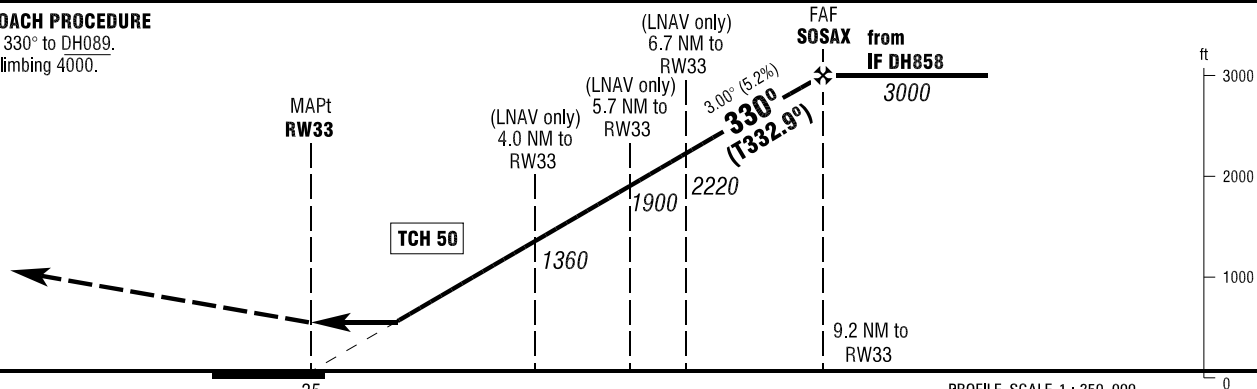
HAMBURG ATIS	124.325	HAMBURG TOWER	126.855
BREMEN RADAR	134.255	HAMBURG GROUND	121.805
HAMBURG DIRECTOR	119.510	HAMBURG APRON	121.705
	118.205		121.980

HAMBURG
RNP RWY 33
EGNOS CH 71147 E33A



MISSED APPROACH PROCEDURE

Climb on course 330° to DH089.
RT direct HAM climbing 4000.



NM	6	5	4	3	2	1	0	1	2	3	4	5	6	7	8	9	10	11	12	13	14	NM																								
OCA (OCH)	A	B	C	D	D _L	<table><tr><td>DIST THR / RW33</td><td>2</td><td>3</td><td>4</td><td>5</td><td>6</td><td>7</td><td>8</td><td>9</td></tr><tr><td>ALTITUDE</td><td>730</td><td>1050</td><td>1360</td><td>1680</td><td>2000</td><td>2320</td><td>2640</td><td>2960</td></tr></table>																	DIST THR / RW33	2	3	4	5	6	7	8	9	ALTITUDE	730	1050	1360	1680	2000	2320	2640	2960						
DIST THR / RW33	2	3	4	5	6																		7	8	9																					
ALTITUDE	730	1050	1360	1680	2000	2320	2640	2960																																						
LNAV	580 (550)	580 (550)	580 (550)	580 (550)																																										
LNAV / VNAV	361 (326)	371 (336)	381 (346)	391 (356)		Timing not authorized for defining the MAPt.																																								
LPV	285 (250)	285 (250)	285 (250)	285 (250)																																										
						<table><tr><td>GS</td><td>kt</td><td>80</td><td>100</td><td>120</td><td>140</td><td>160</td><td>180</td></tr><tr><td>SOSAX - RW33 (9.2 NM)</td><td>MIN:SEC</td><td>6:54</td><td>5:31</td><td>4:36</td><td>3:57</td><td>3:27</td><td>3:04</td></tr><tr><td>Rate of descent (5.2%)</td><td>ft / MIN</td><td>420</td><td>530</td><td>640</td><td>740</td><td>850</td><td>960</td></tr></table>																	GS	kt	80	100	120	140	160	180	SOSAX - RW33 (9.2 NM)	MIN:SEC	6:54	5:31	4:36	3:57	3:27	3:04	Rate of descent (5.2%)	ft / MIN	420	530	640	740	850	960
GS	kt	80	100	120	140	160	180																																							
SOSAX - RW33 (9.2 NM)	MIN:SEC	6:54	5:31	4:36	3:57	3:27	3:04																																							
Rate of descent (5.2%)	ft / MIN	420	530	640	740	850	960																																							

Correction: Communications.